



FOOT BASINS MADE OF CERAMICS



The foot basins made of ceramics have been developed together with the company Sommerhuber especially for the foot bath sputtering system. They are available square- or round shaped.

The basins are casted in one piece and glazed from the interior and from the outside. A false floor made of Corian® is installed by WDT in the basin to realise the sputtering function. The glazing of the ceramics and the colour of the floor are adjusted to each other.

An additional part made of ceramics is available for the installation of the faucets (provided by the client or by WDT) and the buttons for the start of the programmes. The basins with additional part are available for single as well as for double foot bath sputtering systems.

GLAZES SPA CERMAICS



311 sahara



313 umbra



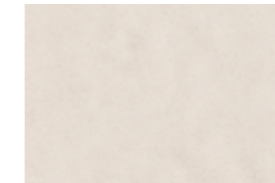
429 basalt light



430 basalt medium



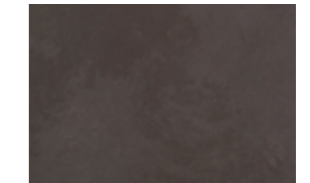
431 basalt dark



446 pebble



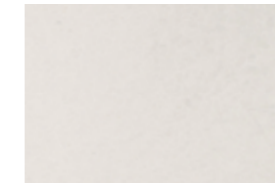
448 graphite



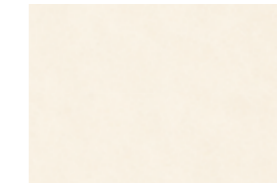
449 lava



453 enamel white matt



454 edelweiss



457 savanne light



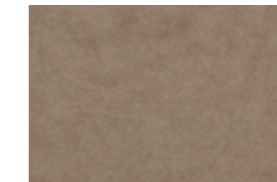
470 fjord light



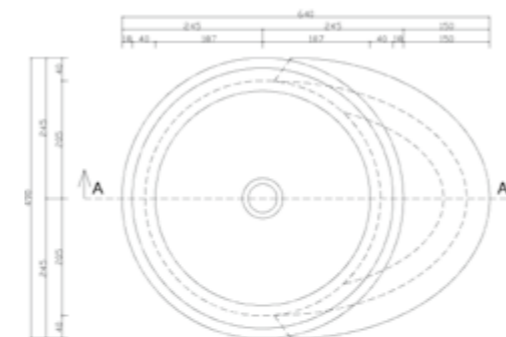
471 fjord medium



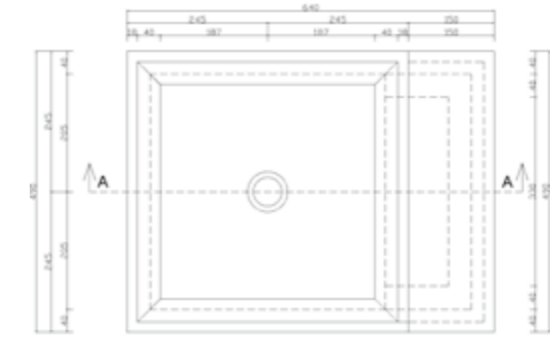
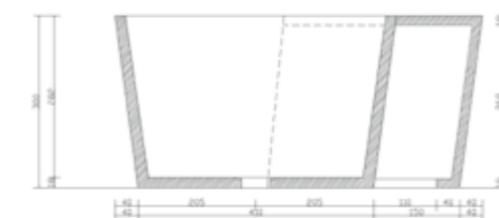
478 taupe medium



479 taupe dark



Cut view
1-1



Cut view
1-1

